



1967-1979 F100 / F150 4wd and 1978-79 Bronco 2005+ Super Duty front end kit instructions.

A few things to know before getting started:

- This kit is not for Supercab applications with leaf sprung original front ends. Those frames accept the F250 lowboy parts.
- 1976 and older trucks require changing the steering box to either a 1976-79 style (which I do not have instructions for) or a 2005-07 SD steering box which requires changing out the engine crossmember and that's a fairly big job
- These kits are overall one of the easiest to install when using a 77-79 steering box, and one of the more difficult to install when using a 2005-07 SD steering box because of the engine crossmember replacement.
- No cutting is required when used with 77-79 steering box

Parts you will need to purchase separately:

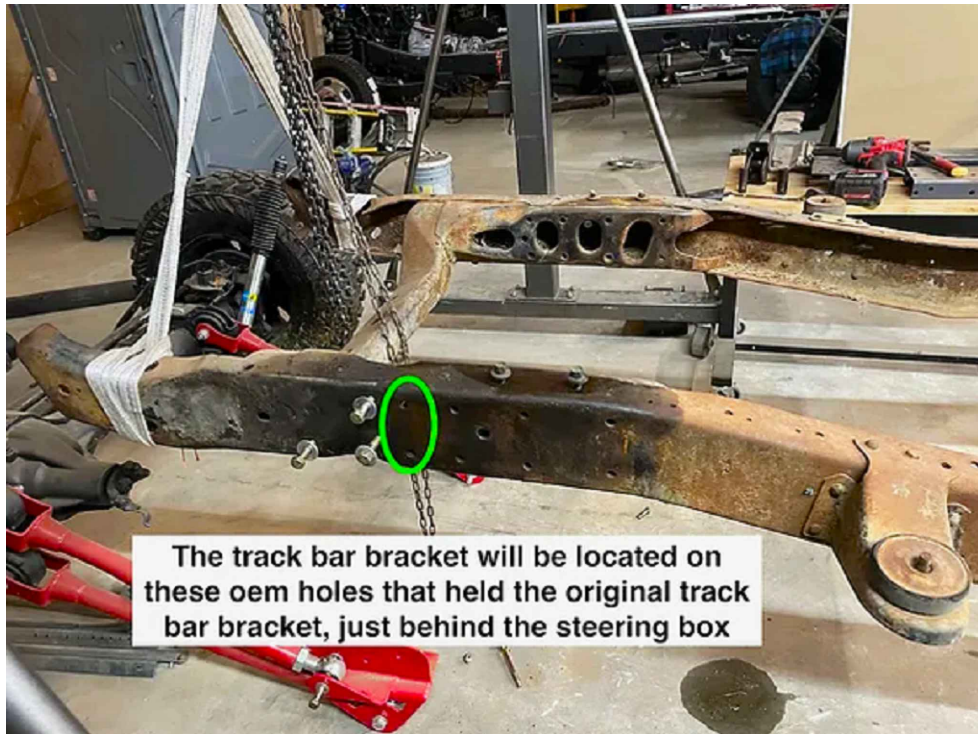
- Front axle- 2005-2016
- Front coil springs- used oem 2005+ SD springs work great
- Front coil spring isolators- From a 2005+ SD. These go between spring and bucket. See part number 5C3Z-5415-AA
- Front radius arms from any 2005+ SD
- Front Shocks- 2005+ SD
- 2005-16 SD track bar
- Length of 1.5" OD 1.0" ID DOM tube such as TU1031 from Summit Racing
- I recommend buying new tie rod ends and ball joints.
- Front rubber brake lines for a 2005-2007 super duty 4wd
- You may be able to reuse your original steering shaft, but if that doesn't work, Borgeson 000970
- Bump Stops- Energy Suspension 9.9137G or similar

No.1

Brackets, hardware, and drilling templates for track bar bracket install

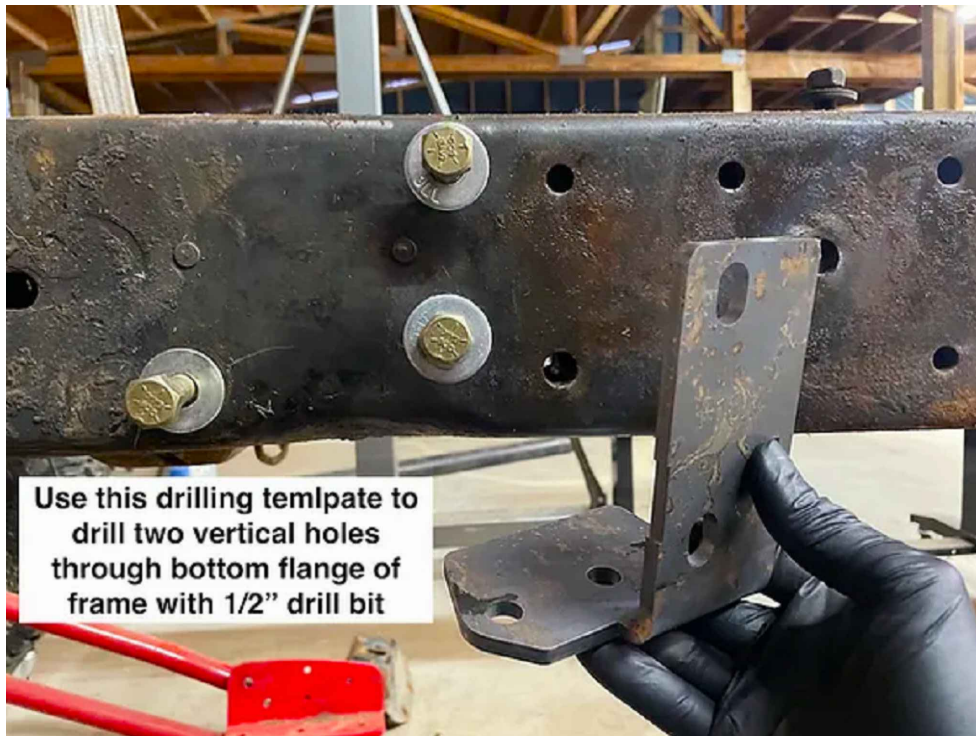


No.2

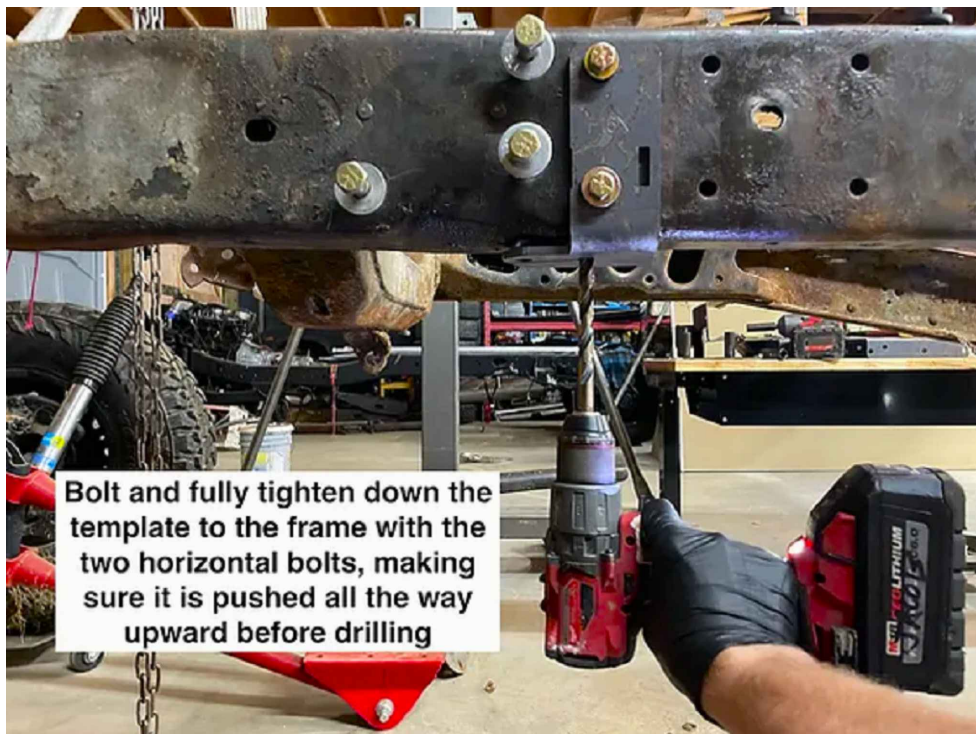


The track bar bracket will be located on these oem holes that held the original track bar bracket, just behind the steering box

No.3



No.4

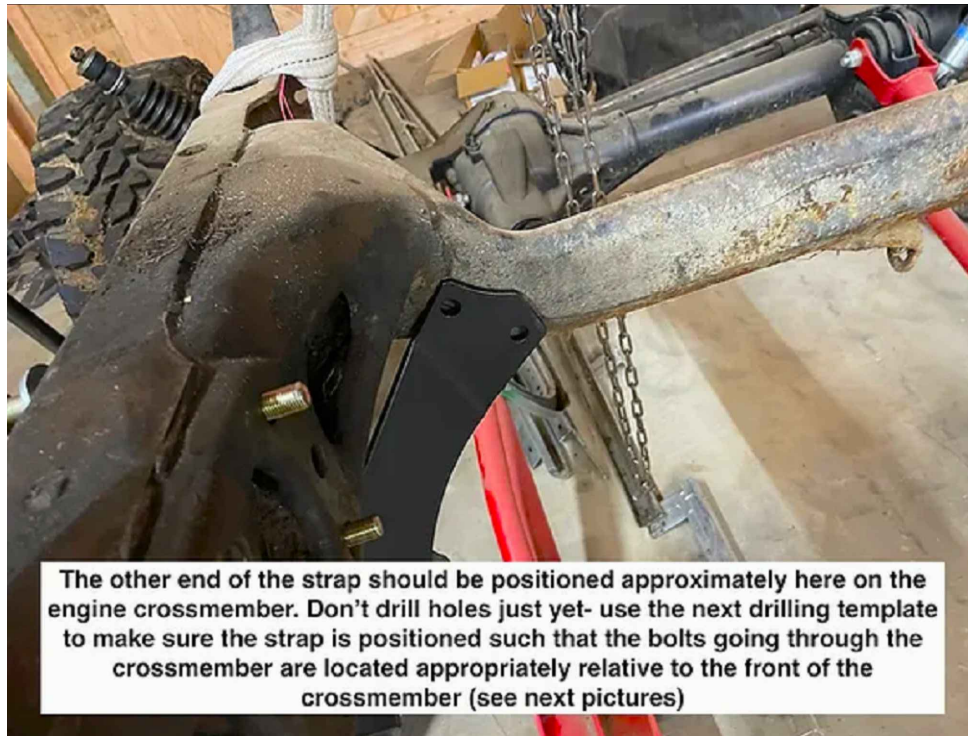


No.5

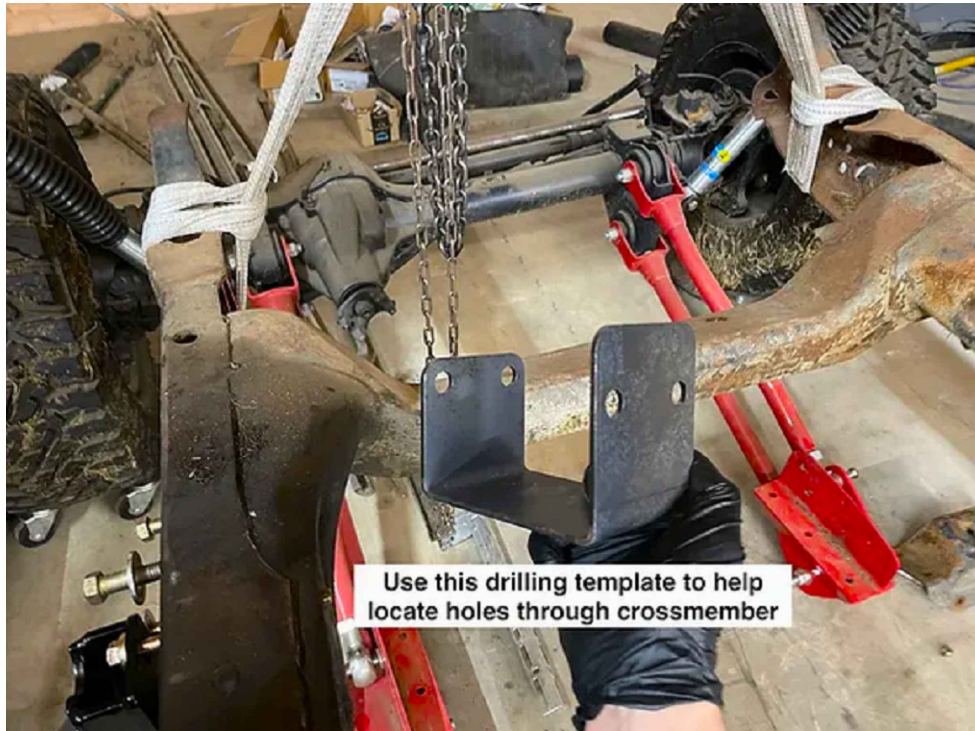
Bolt in track bar bracket with 7/16" bolts going horizontal, and 1/2" x 1.5" bolts vertical through bottom flange, fully tighten these, then insert 20mm track bar bolt through the bracket and support strap as shown, lightly tighten the 20mm bolt/nut



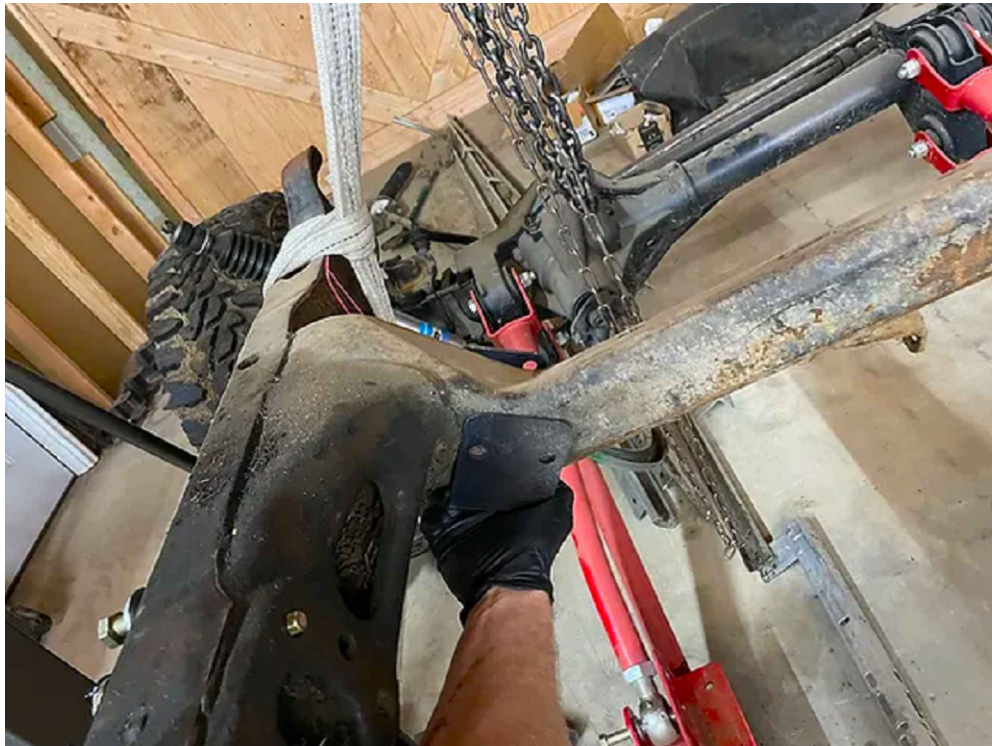
No.6



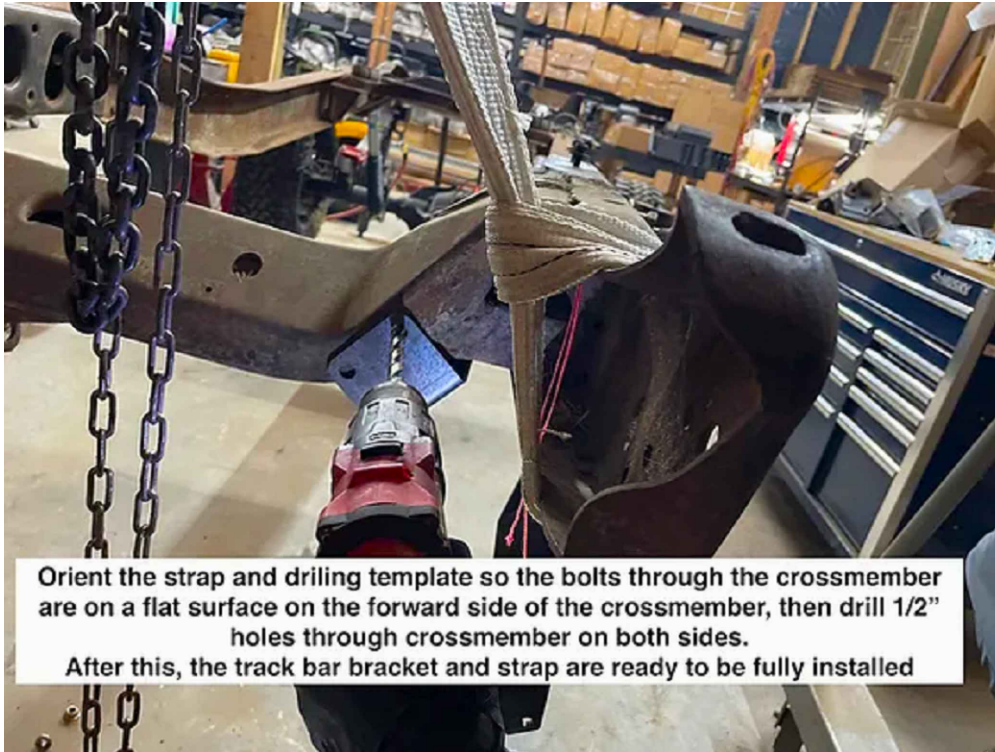
No.7



No.8



No.9



No.10

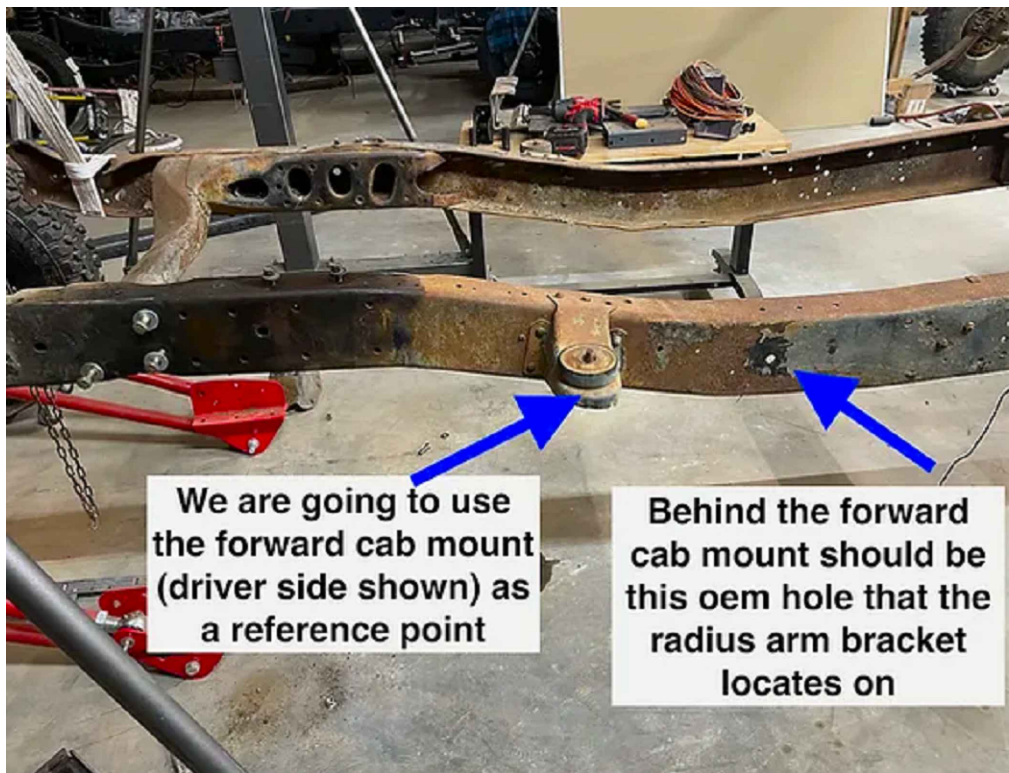


No.11

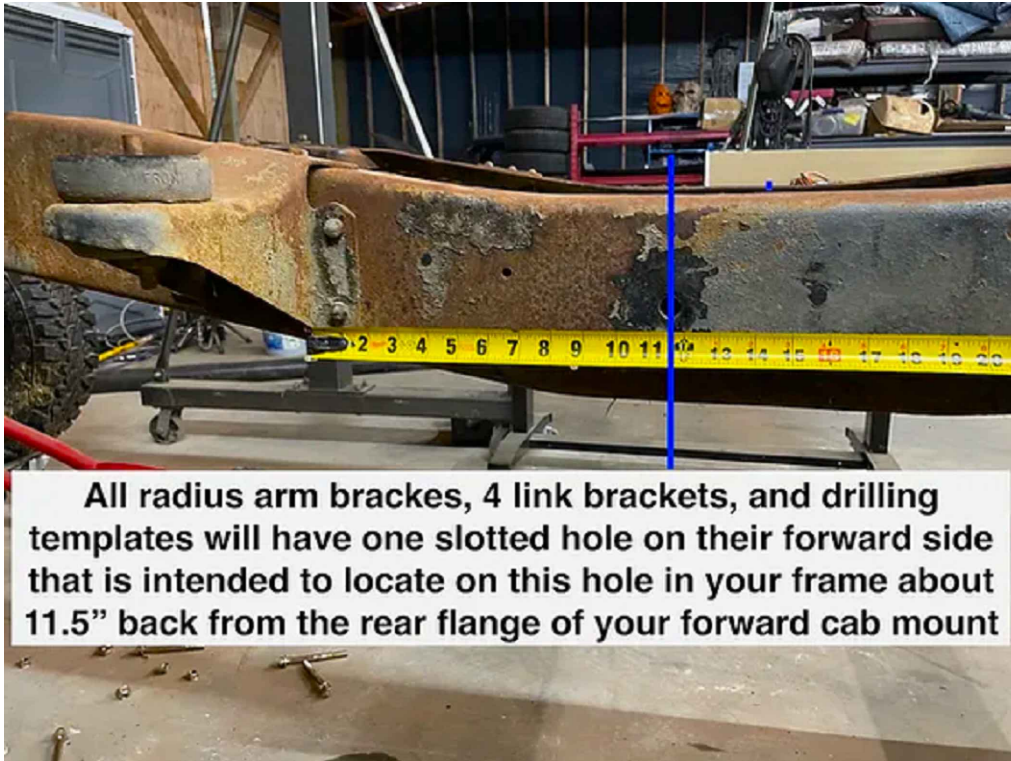
Brackets, drilling templates, and hardware for radius arm bracket install



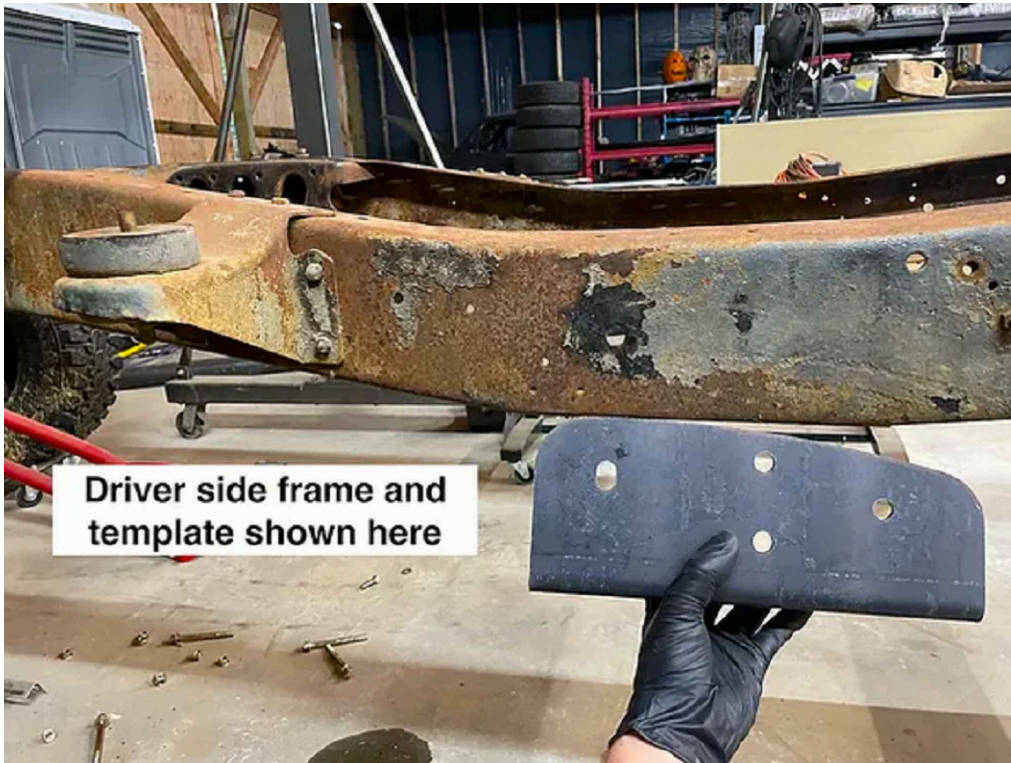
No.12



No.13



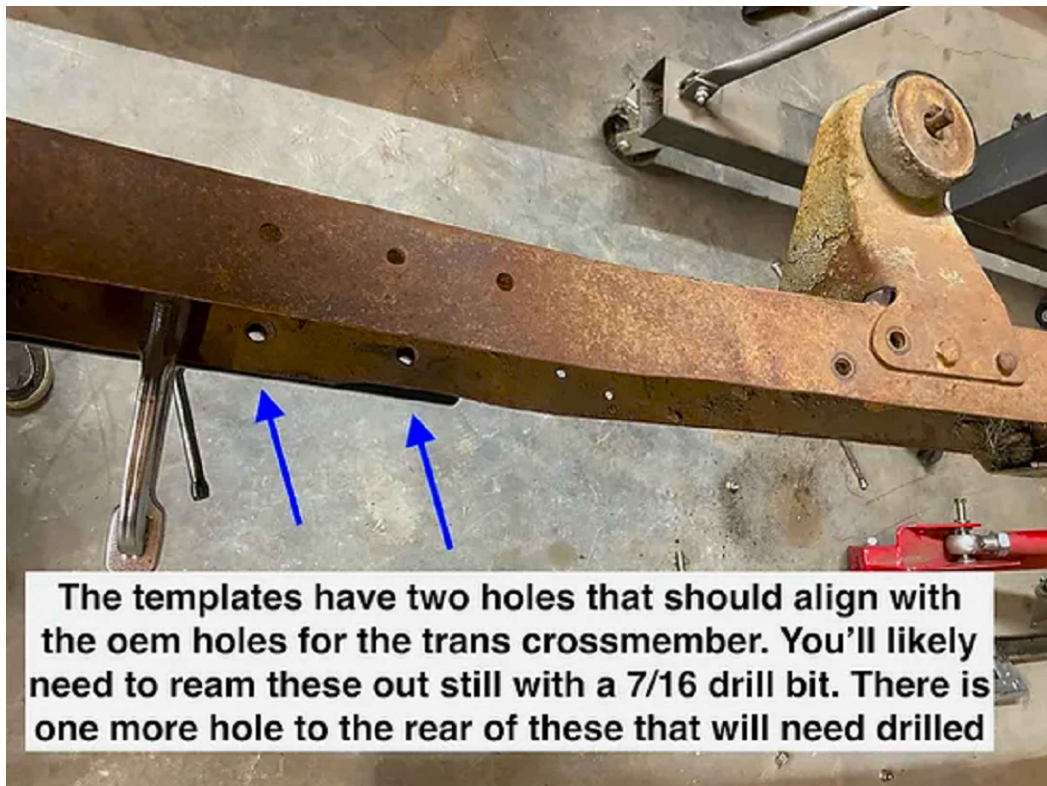
No.14



No.15



No.16



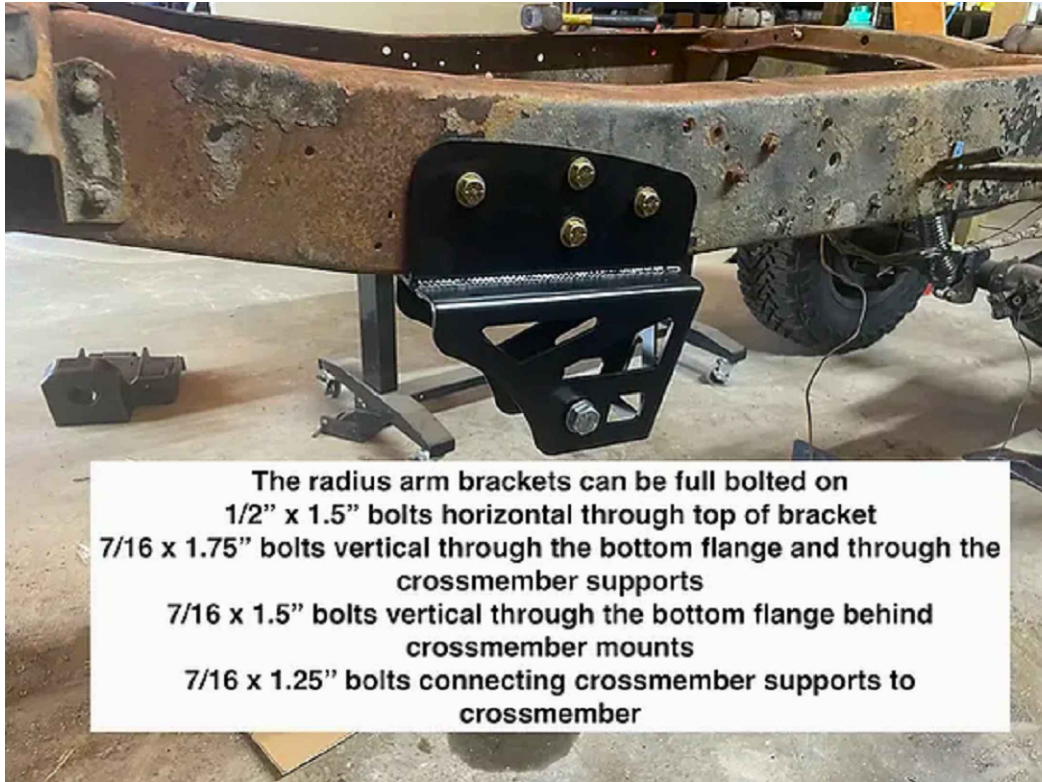
No.17



No.18



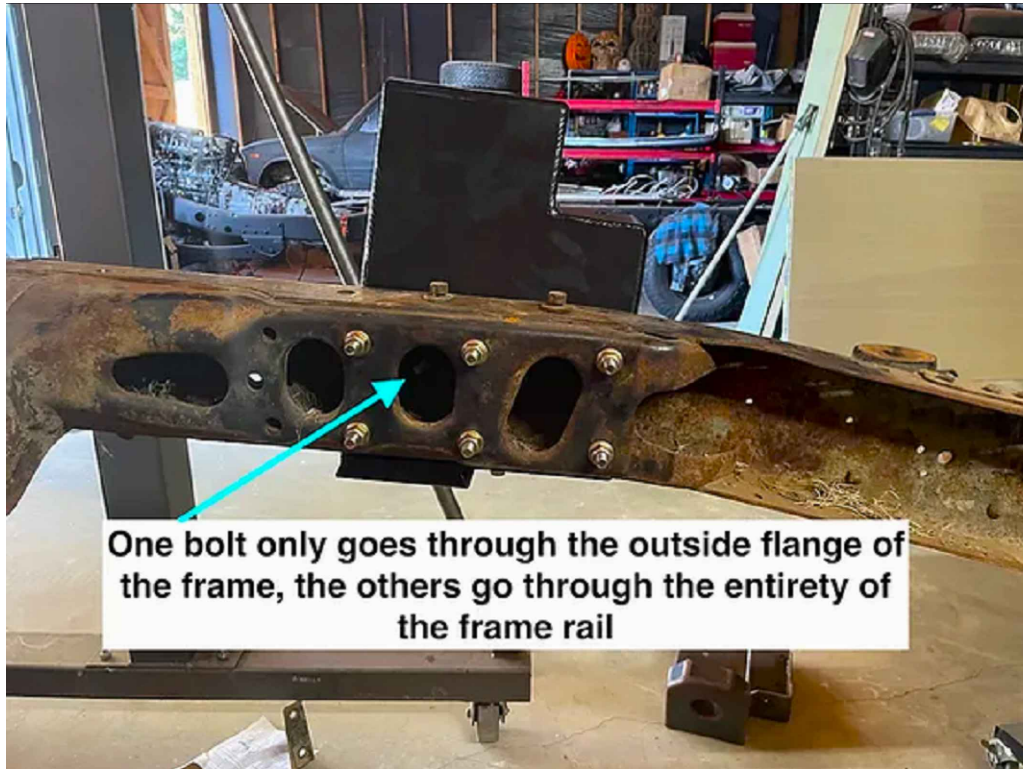
No.19



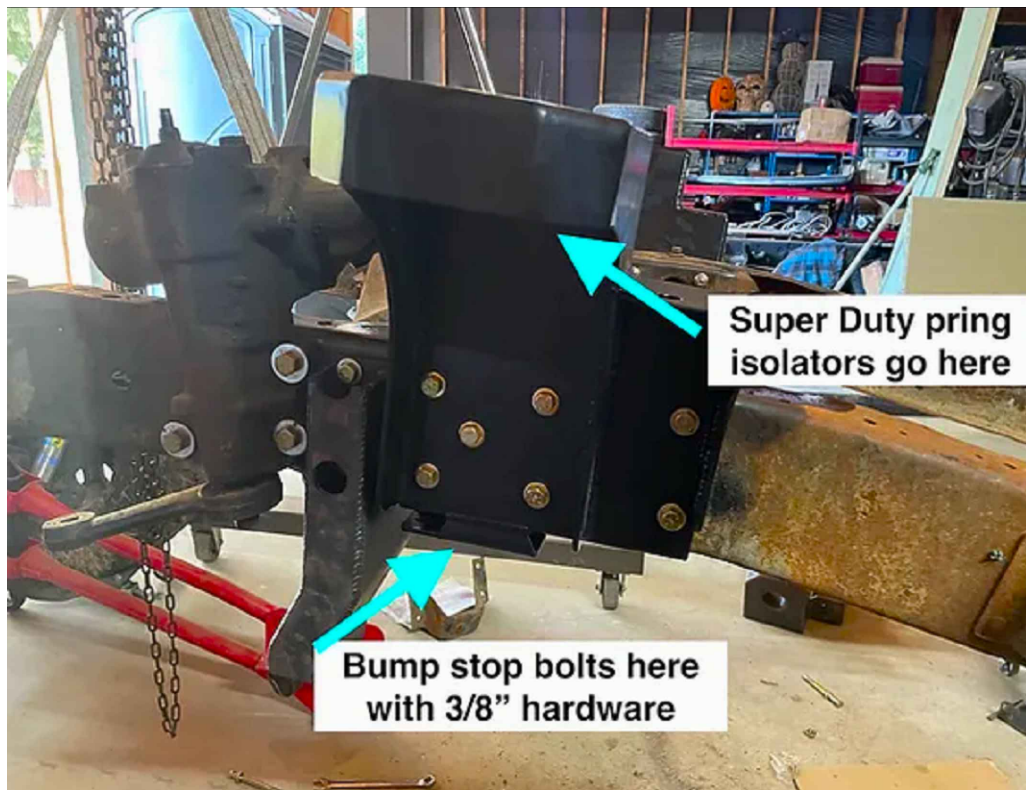
No.20



No.21



No.22

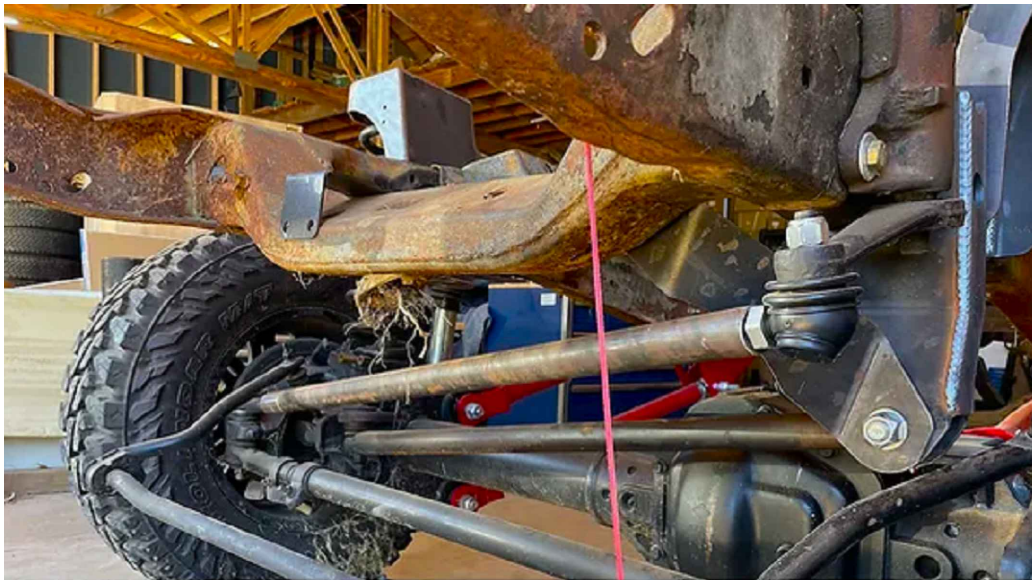


No.23



Use 2005-new SD tie rod end at passenger side knuckle and new BBB supplied tie rod end at pitman arm, and weld machined ends in F03 hardware bag to a length of 1.0" ID 1.5" OD DOM tube

No.24



Point pitman arm straight forward, straighten tires as much as possible, and measure overall length of drag link. Keep in mind length of weld on ends and jam nuts before cutting.

No.25



No.26



No.27

